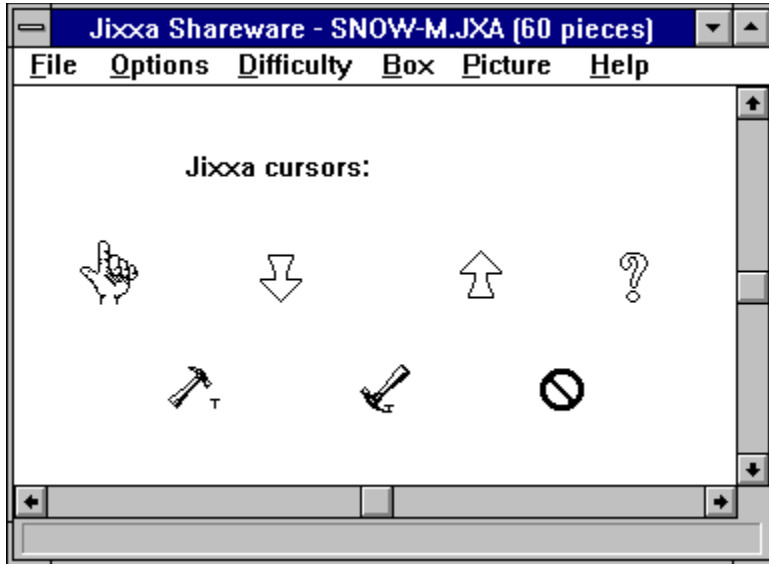


This option is available only in the registered version of Jixxa. This option toggles the display of the timer.

Jixxa Table of Contents

Welcome to Visual Help! Click on any of the window elements below to learn more about Jixxa's various features and options. Clicking on a menu option will pull down that menu so that you may obtain information on its sub-menu options. [Keyboard shortcuts](#) and [helpful hints](#) are also available.



This option saves the locations of hidden boxes. When this option is turned off and a box is shown, it appears in the default position. This option also affects the placement of the picture window.

This option speeds up the animation when dragging several locked pieces. When dragging larger pieces with this option on, only the piece under the cursor is shown and a rectangle shows the approximate size of the entire block. Otherwise the entire block of pieces is animated.



Hammer

This cursor appears when you select Nail/Unnail from the Options Menu. The hammer is used to nail pieces down to prevent them from being dragged.

Hand

This cursor is used to grab pieces.

Scroll bars provide access to a work area that is larger than the screen. These can be toggled by selecting Scroll Bars from the Options Menu. The arrow keys, Page Up, Page Down, Home, and End also scroll the screen.

This option toggles the sound effects.

The title bar shows the name of the current puzzle and the number of pieces it contains.

No!

This cursor appears when you are not allowed to perform a function.

Claw

This cursor appears in Nail Down mode to indicate that a nailed down piece can be released.

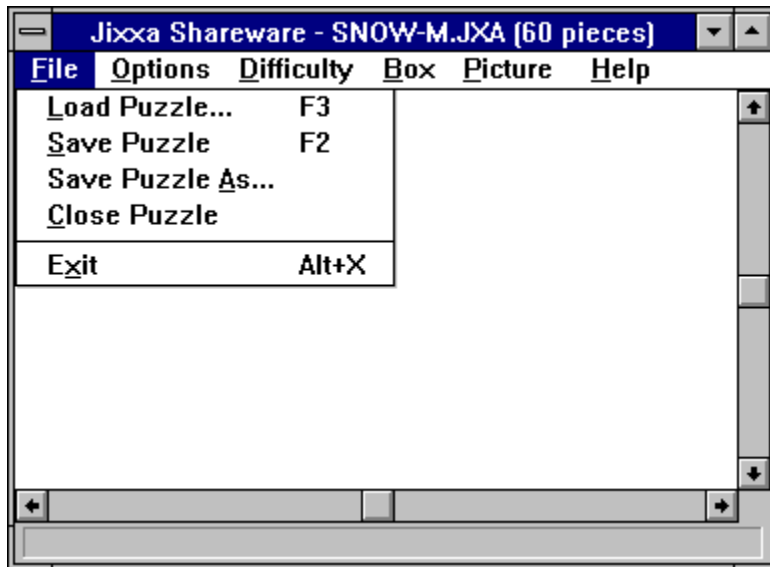
Up Arrow

This cursor appears when the Shift key is pressed. The Shift key in combination with the left mouse button is used to pickup pieces. The Shift key in combination with the right mouse button is used to drop one piece at a time.

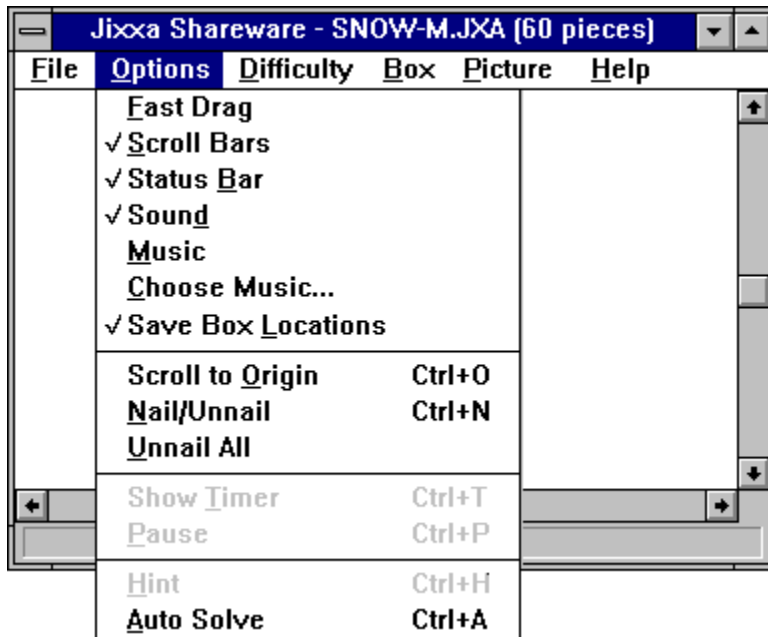
Note: The right mouse button without any keys pressed drops all the pieces you are holding.

The status bar shows the various functions that can be performed. It also shows the number of pieces you are holding. You can toggle the status bar by selecting Status Bar from the Options menu.

File Menu

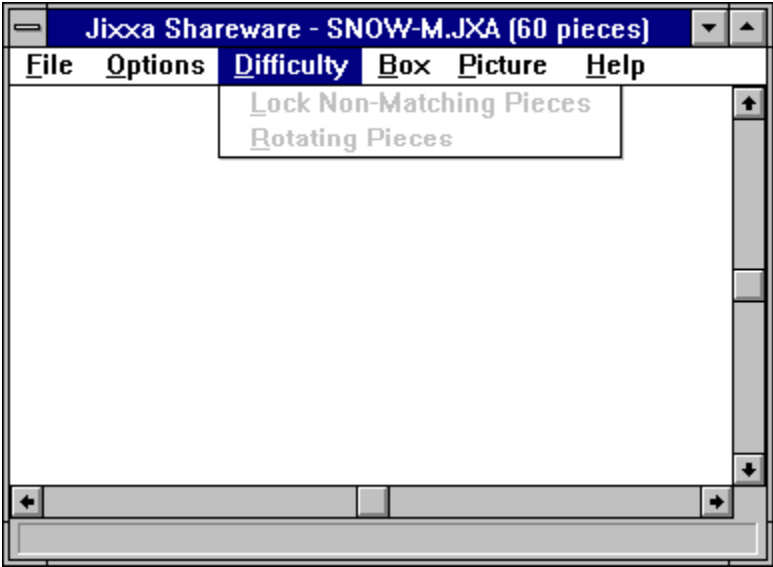


Options Menu

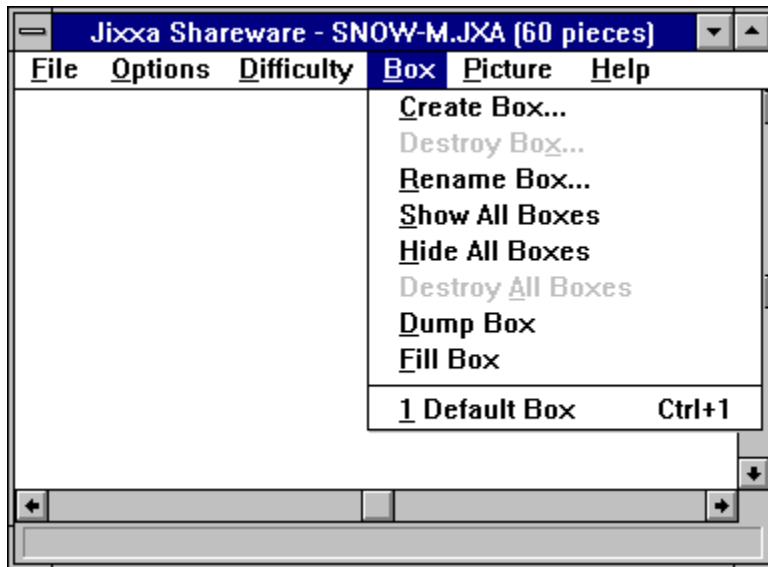


This option closes the current puzzle.

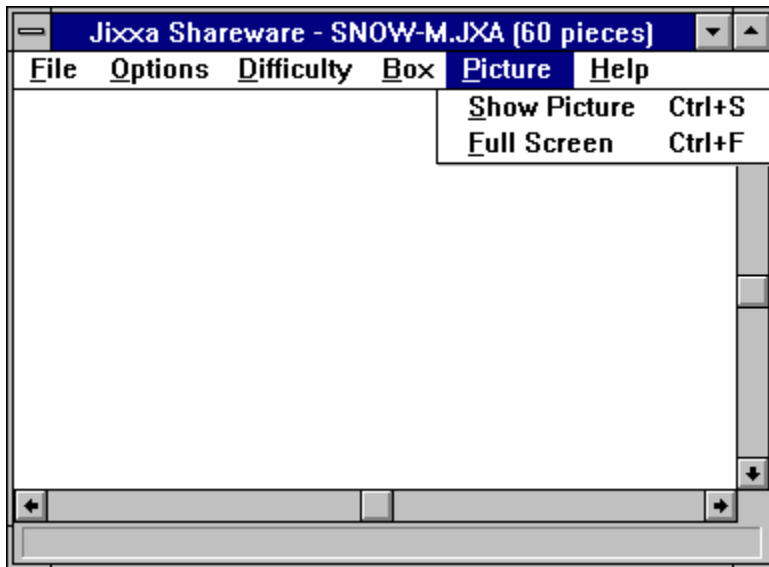
Difficulty Menu



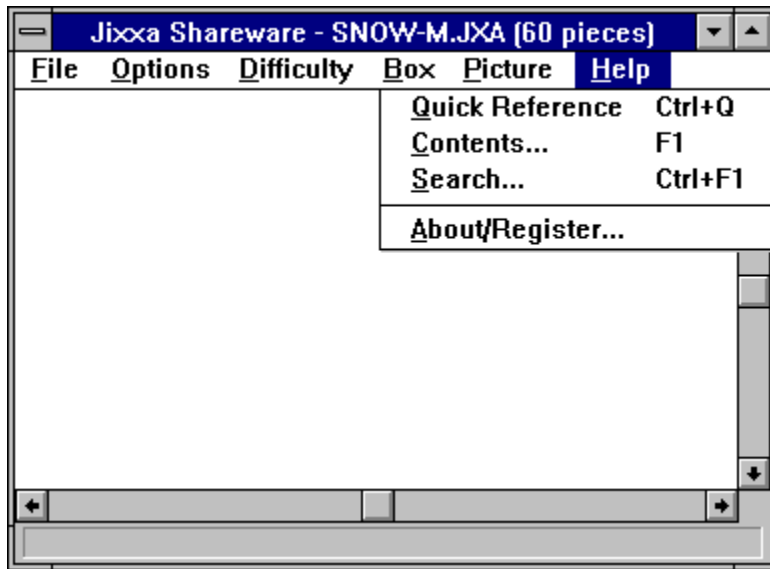
Box Menu



Picture Menu



Help Menu



Question Mark

This cursor is appears in Hint mode. Click on a piece with this cursor to find a match.

Down Arrow

This cursor appears when the Control key is pressed. The Control key in combination with the left mouse button is used to send pieces to the bottom.

Load Puzzle prompts you to load a new or previously saved puzzle.

This option saves the current puzzle with the previously used file name.

Save Puzzle As prompts you to save the current puzzle.

This option centers the screen.

This option exits Jixxa. You may also exit by pressing Alt-X or Alt-F4.

This option allows you to nail a piece to the screen. When a piece is nailed down, it cannot be dragged. This feature is useful when large parts of the puzzle are assembled and you don't want to accidentally drag them. When this option is selected, the cursor will change to a hammer. Click on any piece that is not in a box to nail it to the screen. If the cursor passes over a piece that is already nailed down, the hammer will change to the claw so that you can release the piece. This mode ends when a piece is selected. Press Escape to cancel the nail down mode.

This option releases all pieces that are nailed down.

This Option is available only in the registered version of Jixxa. This option allows you to find a match for any piece. When this option is selected, the cursor will change to a question mark. Click on any piece and Jixxa will find a match, drag the pieces together and lock them. Hint mode ends when a piece is selected. Press Escape to cancel Hint mode.

This option is available only in the registered version of Jixxa. This option pauses the timer.

This option invokes Auto Solve mode. Jixxa will automatically assemble the puzzle for you. When Auto Solve mode is entered, a small control appears at the upper right corner of the screen. This control allows you to adjust the speed or stop Auto Solve.

This option is available only in the registered version of Jixxa. It allows you to lock non-matching pieces that have similar sides.

This option is available only in the registered version of Jixxa. By default, all pieces appear right side up. This option will randomly orient pieces in one of four directions. To rotate a piece, grab it and, while holding the left mouse button, press the space bar. Each time the space bar is pressed, the piece will turn 90 degrees clockwise.

This option allows you to create a new box. Up to 9 boxes can be created. You will be prompted to name your box.

This option allows you to destroy a box. You will be prompted to select a box from the list of all boxes. When a box is destroyed, its contents are dumped on the screen.

Note: There will always be at least one box.

This option allows you to rename an existing box. If there is more than one box, you will be prompted to select which box.

This option shows all boxes.

This option hides all boxes.

This option destroys all boxes. When all boxes are destroyed, the first one remains.

Note: There will always be at least one box.

This option allows you to dump the contents of a box. If there is more than one box, you will be prompted to select a box.

Note: When a box is dumped, the pieces are scattered randomly over the entire screen. In contrast, picking up and dropping pieces scatters them in a closer proximity to the cursor.

This option allows you to pick up all single pieces and place them in a box. If there is more than one box, you will be prompted to select the box.

This is the first box in the list of existing boxes. Selecting a box will toggle it between shown or hidden.

This option toggles the display of the picture. The floating picture can be resized and dragged around the screen.

This option shows a full screen view of the picture. Press any key or mouse button to end this mode.

Note: In the registered version of Jixxa, this option also pauses the timer.

This option shows a Quick Reference to remind you of some helpful functions.

This option allows you to search for a help topic.

This option displays information about Jixxa.

This option brings you to the Contents of this help file.

Jixxa Registration Form

Please use this form to register your copy of Jixxa, and receive the full registered version which provides several additional game features as well as 12 more images (each in 4 different piece sizes for a total of **48 unique puzzle files!**) on your choice of CD-ROMs. There are currently two CD-ROM editions of Jixxa available -- the "Premier Edition" and the "World Travel Edition." Both editions contain everything you need to play Jixxa -- only the puzzle images are different. The Premier Edition contains a generalized collection of images such as landscapes, patterns, animals, and more. The World Travel Edition specializes in images from famous locations, such as the Pyramids of Egypt, the Taj Mahal, Stonehenge, and more. Either edition will offer many hours of enjoyment! Fill out this form and mail or fax it with payment (or credit card information) to:

Rhode Island Soft Systems, Inc.
P.O. Box 748
Woonsocket, RI 02895-0784
U.S.A.

FAX: 401-767-3108

Phone: 1-800-959-7477 or 1-401-767-3106

email: 71231.2614@compuserve.com

- I would like to register Jixxa and receive the **Premier Edition** on CD-ROM. Please send _____ copies of the Jixxa Premier Edition CD-ROM for only \$29.95 (U.S.) each.
- I would like to register Jixxa and receive the **World Travel Edition** on CD-ROM. Please send _____ copies of the Jixxa World Travel Edition CD-ROM for only \$29.95 (U.S.) each.
- I would like to register Jixxa and receive **both editions** of Jixxa on CD-ROM for a special price! Please send _____ sets of both CD-ROMs for the special discounted price of only \$49.95 (U.S.) per set.

1) Subtotal for Jixxa Premier Edition CD-ROMs (# of CDs X \$29.95)	\$ _____
2) Subtotal for Jixxa World Travel Edition CD-ROMs (# of CDs X \$29.95)	\$ _____
3) Subtotal for special offer on both CD-ROM editions (# of sets X \$49.95)	\$ _____
S&H	\$ <u>5.00</u>
Amount Enclosed	\$ _____

I have enclosed payment for the above amount. (in U.S. funds to R.I. Soft Systems, Inc.)

Please charge my: Visa Mastercard AmEx Discover

Signature: _____

Card Number: _____ Exp. Date: _____

My name and mailing address is:

Name: _____

Street/PO Box: _____

City: _____ State: _____ Zip Code: _____

Phone Number: _____ Fax Number: _____

Keyboard shortcuts

See Also: [How to use Jixxa Accelerator keys](#)

Arrow, Page Up, Page Down, Home, and End Keys

The display can be scrolled by clicking on the scroll bars or by using the arrow, Page Up, Page Down, Home and End keys.

Left Mouse Button

The left mouse button is used to grab a piece. If you click the left mouse button while the cursor is not over a piece, a lasso will appear. The lasso is used to pickup single pieces.

Left Mouse Button + Shift Key

The Shift key in combination with the left mouse button is used to pickup individual pieces.

Left Mouse Button + Control Key

The Control key in combination with the left mouse button is used to send pieces to the bottom.

Left Mouse Button + Space Bar

The Space bar in combination with the right mouse button is used to rotate a piece.

Note: This feature is available only in the registered version of Jixxa.

Right Mouse Button

The right mouse button is used to drop pieces. Clicking the right mouse button drops all held pieces and scatters them randomly in the vicinity of the cursor.

Right Mouse Button + Shift Key

If you hold the Shift key and press the right mouse button, one piece will be dropped underneath the cursor.

Right Mouse Button + Control Key

The Control key in combination with the right mouse button is used to unlock pieces.

How to Use Jixxa

See Also: [Keyboard shortcuts](#)

Jixxa is a realistic jigsaw puzzle. When you start a new puzzle, the pieces will be scattered about the screen. You can click on pieces using the mouse and drag them around the screen. You can also pickup pieces, sort them into boxes and even ask for a hint or have the puzzle solved for you.

Jixxa is controlled primarily with combinations between the keyboard and mouse. The cursor will change automatically to assist you in determining the various functions that can be performed. There is also a description of each function on the status bar at the bottom of the screen. These are the cursors you will see in Jixxa:

Hand	This cursor is used to grab pieces.
Up Arrow	This cursor is used to pickup pieces.
Down Arrow	This cursor is used to send pieces to the bottom.
Question Mark	This cursor is used to get a hint. Click on a piece to see where it goes.
Hammer	This cursor is used to nail pieces down. A piece that is nailed down cannot be dragged. If a piece is already nailed down, the hammer turns upside down (Claw) to indicate that the piece can be released.
Claw	This cursor is the upside down hammer. It is used to release pieces that are nailed down.
No!	This cursor indicates that a function cannot be performed at the cursor location.
Double Arrows	These cursors appear when a box can be sized or moved.

The left mouse button is used to grab a piece. When a piece is grabbed, it will lift off the screen slightly and a shadow will appear under it. While holding the left mouse button, you can drag the piece around the screen by moving the mouse. When you release the left mouse button, the piece will be dropped. If the piece is in the vicinity of a matching piece, the two pieces will be locked. Locked pieces become a single unit and can be dragged as a single piece.

Note: A snapping sound is played whenever two pieces lock. To hear this sound, the Sound option on the Options menu must be checked and your system must have a sound driver installed.

If you click the left mouse button while the cursor is not over a piece, a lasso will appear. The lasso is used to pickup single pieces. While holding the left mouse button, move the mouse to drag the lasso around the pieces you wish

to pickup. Any pieces that are within the boundaries of the lasso will be picked up. Note that if the lasso is started on the screen then only pieces on the screen will be picked up, and if the lasso started in a box then only pieces in that box will be picked up. The status bar at the bottom of the screen will show how many pieces you are holding. Any number of pieces can be picked up.

The Shift key in combination with the left mouse button is used to pickup individual pieces. Simply click on the piece you wish to pickup. Whenever the Shift key is depressed, the cursor will change to an up arrow to indicate that pieces can be picked up. Note that if the cursor is over a box but not over a piece, the cursor will change to a crossed arrow indicating that the box may be moved.

Note: Only single pieces can be picked up. Once two or more pieces have been locked, they cannot be picked up.

The right mouse button is used to drop pieces. Clicking the right mouse button drops all held pieces and scatters them randomly in the vicinity of the cursor. If you hold the Shift key and press the right mouse button, one piece will be dropped underneath the cursor.

The Control key in combination with the left mouse button is used to send pieces to the bottom (that is, push a piece underneath all other pieces). Whenever the Control key is depressed, the cursor will change to a down arrow to indicate that pieces can be sent to the bottom. Note that single pieces cannot be sent under assembled pieces.

The display can be scrolled by clicking on the scroll bars or by using the arrow, Page Up, Page Down, Home and End keys. The display will also scroll automatically if the left mouse button is held and the cursor is moved to the edges of the display.

Boxes can be resized, moved and hidden. When a box is visible, you can drag pieces in and out of it, or pickup pieces and drop them in or out of the box.

Note: Only single pieces can be in a box. Pieces cannot be assembled in a box.

You can interrupt the puzzle for a full screen view of the picture. Note: In the registered version of Jixxa, the timer will be paused when using full screen view. The picture can also be seen in a floating box top. The floating picture can be resized, moved and hidden. The picture is always on top of everything else.

Accelerator keys

F1 Exit
F2 Save Puzzle
F3 Load Puzzle

Alt+XExit

Alt+F4 Exit

Ctrl+A Auto Solve
Ctrl+F Full screen picture
Ctrl+H Hint (registered version only)
Ctrl+N Nail/Unnail
Ctrl+O Scroll to Origin
Ctrl+P Pause timer (registered version only)
Ctrl+Q Quick reference
Ctrl+S Show picture
Ctrl+T Show timer (registered version only)

Ctrl+F1 Help Search
Ctrl+(1-9) toggles box (1-9)

This option toggles the playing of background MIDI music.

This option allows you to select the directory where MIDI files are located. Those MIDI files will be played as background MIDI music while you build your puzzles.

